



**QIPCAM,**

**PROVEN IN-LINE,**

**100% SEAL INSPECTION &**

**QUALITY ASSURANCE EQUIPMENT**

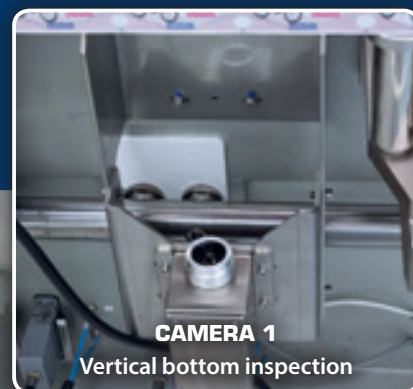


## PROTECT YOUR BRAND IMAGE

## STOP PRODUCT SPILLING

## STOP QUALITY CLAIMS

## START SAVING MONEY TODAY



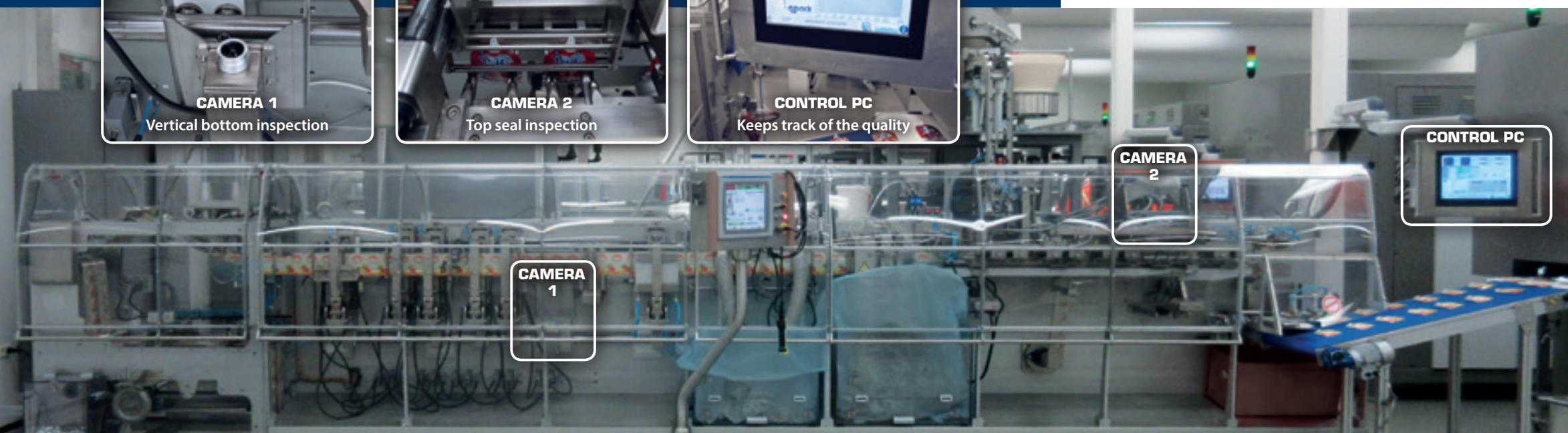
**CAMERA 1**  
Vertical bottom inspection



**CAMERA 2**  
Top seal inspection



**CONTROL PC**  
Keeps track of the quality



**CAMERA 1**

**CAMERA 2**

**CONTROL PC**

## QIPCAM IN-LINE INSPECTION SYSTEM

The new seal quality inspection technology is based on high definition infrared camera images. Direct after the seal has been produced, an image is taken and analyzed by special software. Due to this continuous inspection of the seal pressure, temperature and time the quality of the packaging can be guaranteed. This will be carried out during production and defects are therefore immediately and in-line detected. In case of finding errors, the package will be pushed out for further investigation by a rejecter unit. Every individual package is therefore investigated on its tightness, independent of the production rate. The Qipcam consists of the following 3 units:

### 1. HIGH PERFORMANCE INFRARED CAMERA

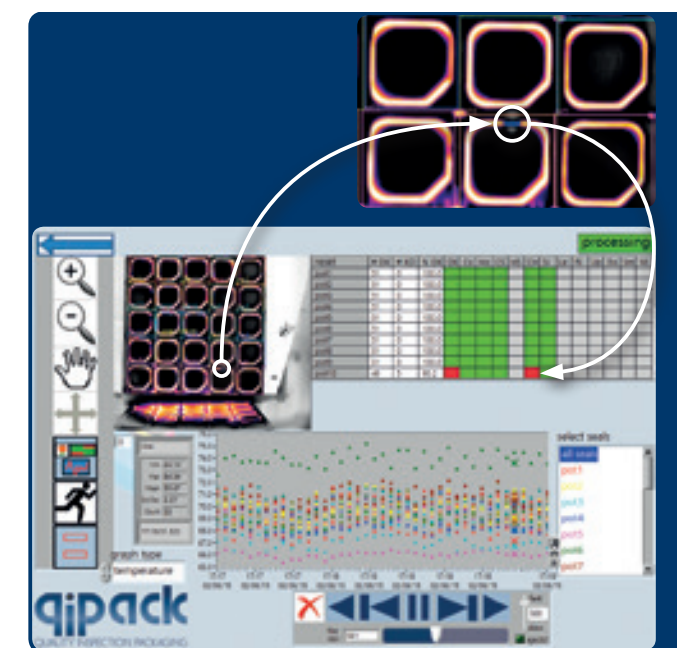
Records both the standard (therefor good) seals and all kinds of changes in seal quality which will be compared to each other.

### 2. CONTROL PC

- o IP66 Stainless steel enclosure.
- o different IO's to rejecter.

### 3. QIPCAM SOFTWARE

Analysis of pixels received from the camera translated into a seal quality finger print.



## KEY BENEFITS

Continuous, real-time and non-destructive monitoring of the seal/welding quality. Any kind of changes in performance of the packaging machine and product in-feed will become visible.

Improve sustainability and environmental friendly production:

- o First time right, prevent product waste.
- o Optimal control on small seal windows:
  - o Less use of packaging material; thinner laminates possible at higher speed.
  - o Biodegradable/biobased laminates become possible.
  - o Mono-materials at high quality packaging concepts become possible.

Can be used for all kinds of packaging machines: horizontal pouch/sachet lines, bagmaking machines, stickpack machines, tray sealers, flow wrappers as also thermoform machines.

Barcode and ingredients declaration inspection is an option.

Makes the following defects clearly visible:

- o Product in seal.
- o Wrinkles and folds of laminate in seal.
- o Laminate defects; for example delamination, mistakes in laminate composition etc.
- o Dirt and PE appearing on seal-tooling.

## QIPCAM WORKING PRINCIPLE

In a fraction of a second, a quality test is performed. When the seal quality of the package is satisfying, the newly sealed package is passed through. If not, it will be removed from the production line by a rejecter unit, mostly delivered by our industrial partners.

The operator can interfere at the line whenever needed, no special actions to the Qipcam are needed.

Due to the special used inspection technology and software, the QipCam can detect all common existing failures in all kind of laminates, with or without printing, biobased and extreme thin foils, mono-materials or aluminum. Seal pressure, temperature and laminate failures will become clearly visible to control.

### HIGH SPEED, HIGH QUALITY, HIGH ACCURACY

Determination of optimal machine settings to obtain defect free packaging at high speed.

### IDENTIFICATION OF ERROR CAUSES

Examination of ejected packages to obtain feedback for continuous improvement of total packaging process.

### PROVIDES IN EARLY WARNING AND PREVENTIVE MAINTENANCE WILL BECOME POSSIBLE

Software monitoring of the packaging process provides early warning parameters to prevent production loss due to stand-still.

## CONTACT US

Take five minutes to explain us your difficulties in obtaining satisfying production quality. At all time, our demonstration Qipcam is ready to show the performance at your production line, without stopping it at all. We will gladly serve you achieving your goals.

- Looking for ways how to improve your production sealing quality?
- Trying to automate current inspection procedures?
- Like to reduce labor and gain trust in your packaging process?
- Worrying about the quality of every single package leaving your production site?
- Need to get the most accurate control of your current production quality?

### QIPACK BV

Vughterweg 7  
5211 CJ Den Bosch THE NETHERLANDS  
info@qipack.com  
0031 6 25 00 61 13  
VAT: NL8568127005B01  
bank account IBAN: NL35 INGB 0007 4292 02  
BIC: INGBNL2A

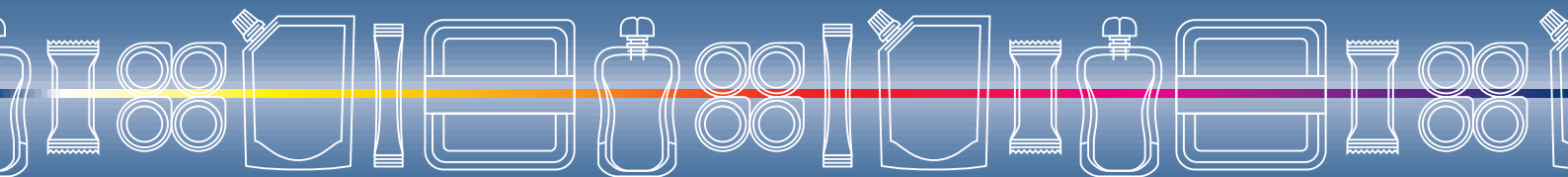
### QIPACK BVBA

Drève de Triage de la Bruyère 56B  
1420 Braine-l'Alleud BELGIUM  
info@qipack.com  
0031 6 25 00 61 13  
VAT: BE-0835.333.217  
bank account IBAN: BE58 3300 7354 7979  
BIC: BBRUBEBB

[WWW.QIPACK.COM](http://WWW.QIPACK.COM)

# qipack

QUALITY INSPECTION PACKAGING



**BOSSAR**

Capri-Sun



**KraftHeinz**

Heraeus

