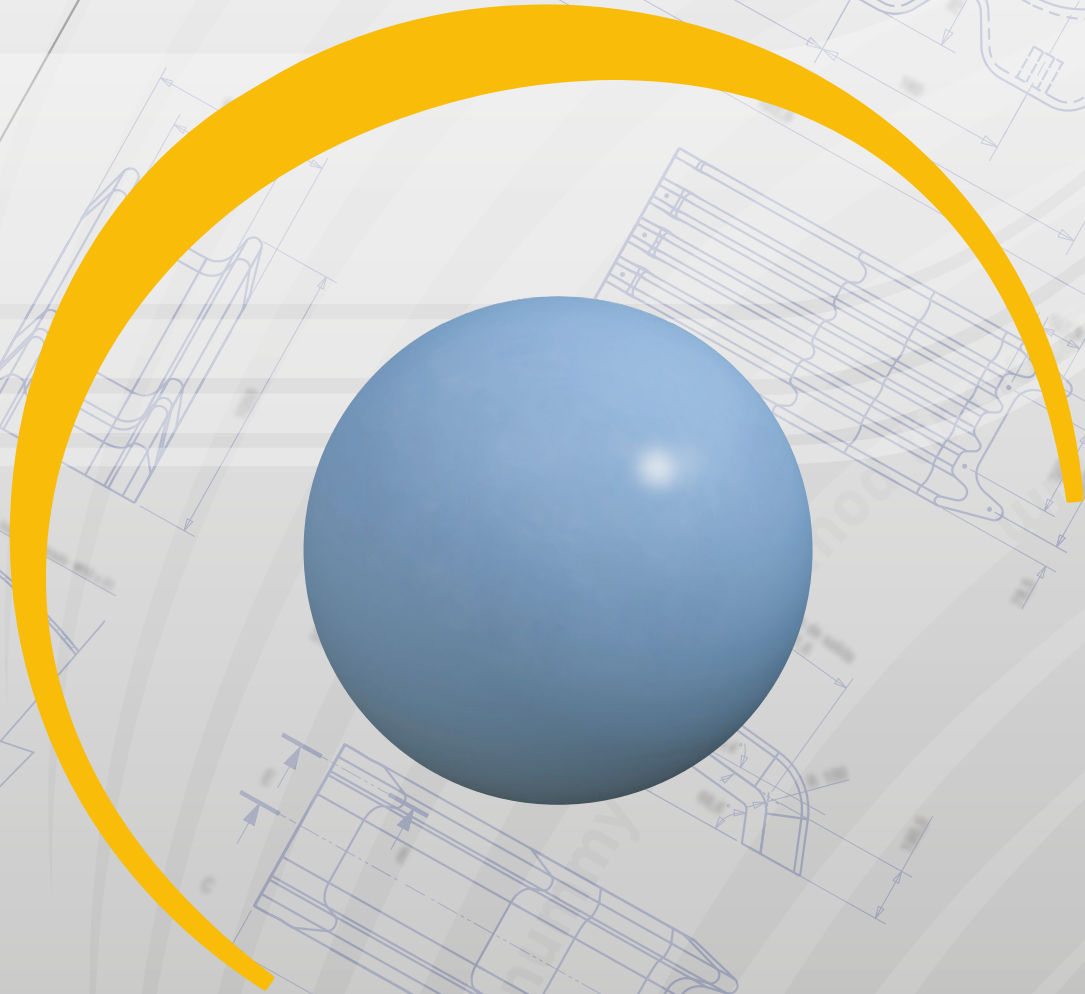


ABC ROTOMOLDEO®

ROTOMOLDING GLOBAL CONCEPT



EXPERTS IN ROTATIONAL MOULDING



THE COMPANY

At **ABC ROTOMOLDEO** we specialize in manufacturing plastic products for other companies using rotational molding. Our facilities and machines are next generation in rotomoulding, **we have the capacity to make 4500mm spherical diameter pieces.**



EXPERTS IN ROTOMOULDING

ADVANTAGES AND APPLICATIONS

Reduced cost of materiales

Design flexibility

Small or large outputs

Opportunity to integrate fittings and compounds:
Threaded inserts, armours, hinges, tubes, etc

It keeps the chemical and material properties in the long run,
with high resistance to chemical agents, corrosion, UV sunlights, impacts, etc.

Special materials:

- Fireproof
- Conductive
- Antistaticos
- Pore-free (dirt-repellent and improves cleanliness)
- Biobased (mixture of standard and organic materials)
- Doble layered
- Flexible
- Cross-linked

Recyclable materials

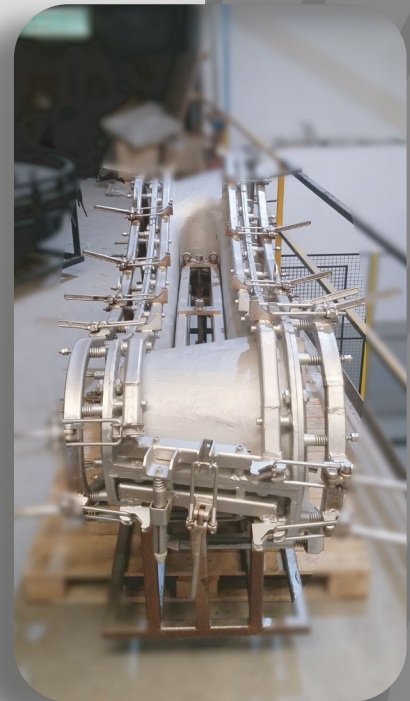


Thickness between 2 and 20 mm
with no needs to modify the mould

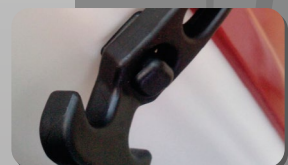
All colours

More than **200 textures**

ALUMINIUM AND STEEL MOULDS

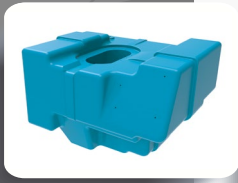


INSERTS, FITTINGS



MULTI-INDUSTRY MANUFACTURING

DUE TO ITS VERSATILITY AND TECHNICAL CHARACTERISTICS, THE PRODUCTS MADE BY ROTOMOULDING ARE USED IN EVERY INDUSTRY AND APPLICATION.



Flowerpots Lampost Livestock Medians
Water tank Septic tanks Street furniture Food Coat racks Lamps Water pipes
 Bodywork Chests **Lighting** Sewage treatment plants Pallets Road safety Cones Troughs
Planters Agricultural Wind Oil tank Fuel Bins Chairs Containers Stools
 Tanks Depots Pontoons Nautical Clinical furniture Landmarks Exhibitors Container of chemical products Atomizers
 Urban waste Lifeguards Shelves Kayaks Machinery Canoes Recycling containers
Barriers Mannequins Signage Protections Hanging lamps Toys Agriculture Floor lamps
 Seats Feeders Feed hoppers Industrial components Playgrounds Shop window elements

QUALITY AND ENVIRONMENT



Certificates **ISO 9001 :2015** and **ISO14001 :2015**

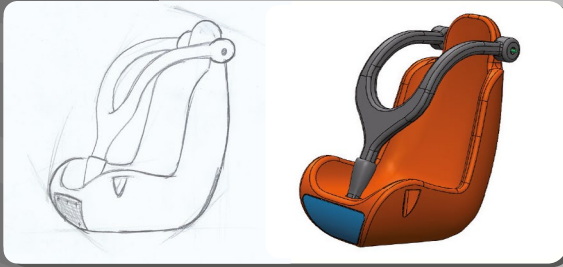
Control and verification of 100% of the production

Laboratory for product testing

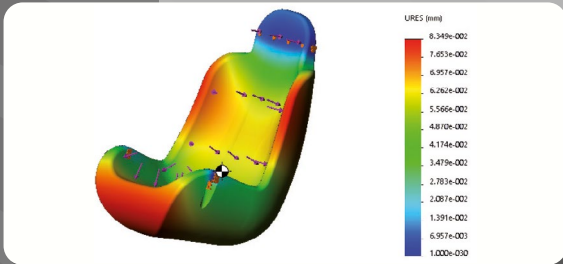


COMPLETE DEVELOPMENT OF PROJECTS

DESIGN



STUDY



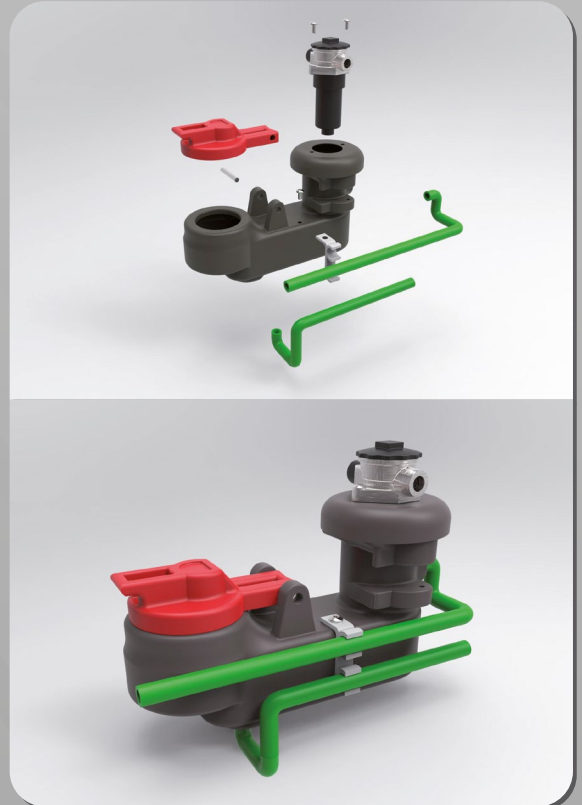
MOULDS



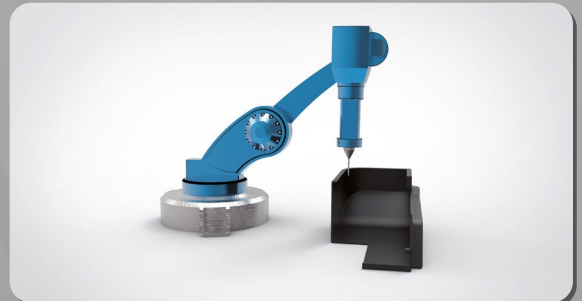
MANUFACTURING



ASSEMBLY SERVICE



POSTPROCESS SERVICE



WHERE TO FIND US?

From Madrid:
Motorway A-3 direction Valencia, exit 114

From Valencia:
Motorway A-3 direction Madrid, exit 117

GPS coordinates: 39.874275, -2.662249

ABC ROTOMOLDEO INDUSTRIAL

Polígono Industrial San Juan
C/ San Cristóbal, 5
16440 Montalbo (Cuenca) Spain

Tel: +34 969 130 382

Fax: +34 969 130 990

comercial@abcrotomoldeo.com

www.abcrotomoldeo.com

ABC ROTOMOLDEO®

